

# SMINFINITY

QUALITY + CARE

SPRING SUMMER 2024 | HANG LOOSE



Thousand waves knows the Hawaiian language.  
Energy traveling across the sea. Being in the moment.  
Gliding to shore with a wave. Salty hair. Tingling soles of the feet. The relaxed surfer mood is timeless – Hawaiian surfer culture inspires SMINFINITY for the Spring Summer 2024 collection.

[www.sminfinity.de](http://www.sminfinity.de)

QUALITY

The origin of the queen of fibers is close to the clouds: At an altitude of up to 4000 meters, cashmere goats live in a climate to which their coat is precisely adapted. In addition to the long outer coat, they have a particularly fine, soft undercoat, which is close to the body, soft and warm.

It is only from these precious hairs of the undercoat that the cashmere wool is carefully combed out, collected and sorted by hand. A cashmere goat yields only 100 to 200 grams of fiber per year.

Cashmere is uniquely fine and light (fiber diameter 15 – 19 microns – 1/6th of a human hair), yet warming, temperature balancing, wrinkle resistant and odor neutralizing. Since the fiber is naturally stain resistant, high temperatures are not necessary when washing.

Our cashmere – both solid colors and melange – is exclusively „top dyed“: in this elaborate dyeing technique, the flocks are dyed before the yarn is spun. This makes the yarn more resistant.

We only use the longest and finest fibres for the high-quality classic two-ply yarn, which is therefore dimensionally stable and less prone to pilling. Processed in some styles as a multi-threaded cablé yarn – even more robust and with a clear stitch pattern due to the stronger twisting.

With us, cashmere is always knitted in shape („Fully Fashion“) and never cut. Thus, none of the precious raw material is wasted – sustainably and consistently.

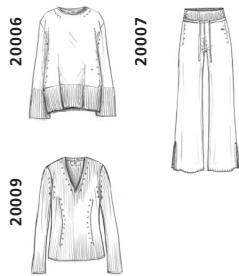
Fully Fashion marks are therefore a factor for high-quality production and not a knitting defect.

Single-thread knitted on a fine machine for a clean, super-fine smooth knit. Plain or with an all-over coco print.



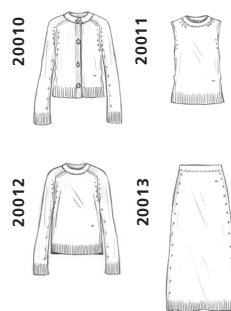
© 400

The „pure“ series: single-thread knit in plain knit with half-patent details for the jumper or slit details for the trousers. For the V-neck in all-over half-patent with elaborate fully fashioned details.



© 400

The „pure“ series: two-ply knit with saddle raglan seams and 1x1 rib details. The A-skirt is knitted in an A-line shape.



© 400

Multi-thread knitted in half-patent – for our „icon“ styles. With the typical, elaborately placed fully fashion details for the turtle jumper and the vest with SMINFINITY horn buttons.



© 800

Multi-thread twisted as cablé and knitted in a coarse stitch – as a plain knit with clean edges. Puristic lightness and volume.



20016

© 800

**HANDCROCHET** Multi-thread hand crocheted in openwork vertical multicolour stripes.



20018

© 800

### CARE

With proper care, a cashmere sweater will last a lifetime. Caring for cashmere properly is uncomplicated. It only requires a little care.

#### WASHING

- 30°C
- wool wash
- machine wash
- separately or max. 1 – 3 pieces, which float loosely
- same materials
- similar colors
- close all buttons
- only liquid detergent in low dosage
- special wool detergents prevent felting or roughening of the surface during washing
- recommendation: SMINFINITY Cashmere Care
- no bleaching agents
- no fabric softeners
- no full detergents
- do not leave in the wash water
- spin gently
- max. 400 / 800 © rotations: See carelabel! (The spin speed varies depending on the knitted fabric – the coarser, the more moisture must be spun out after washing to keep the model from losing its shape).

#### DRYING

- lying
- absorbent pad
- bring into shape previously
- not in the sun
- not on the heater
- dryer: max. 3 – 5 min. in wool finish program

#### STEAMING

- ironing not necessary
- at most gently from the left at max. 110°C
- steamer recommended – especially for coarser structures

#### STORAGE

- natural fragrances (lavender or cedar wood) in the closet keep moths away

#### PILLING

Prevent:

- Minimize risk of friction – e.g., do not wear heavy jackets with a rough inner lining

Remove:

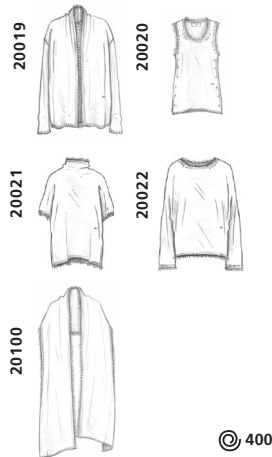
- The gentlest way is to pluck the nodules by hand after washing (before the dryer) when damp.
- or remove with a cashmere comb carefully in the direction of the stitches (the comb roughens the surface somewhat – therefore only use carefully)
- electric razor not recommended (only for very smooth surface, so as not to damage the yarn structure – use without too much pressure and lying on a smooth surface in the direction of the stitch)
- Most knots disappear just by washing and during the drying process in the 5-minute wool-finish program.

## QUALITY

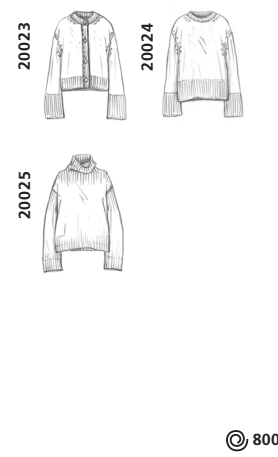
A super soft, brushed yarn made from the highest quality cashmere from Inner Mongolia, combined with the finest silk. For the „fluffy“ series, both qualities were twisted and then roughened by brushing. The roughened surface and a particularly airy-loose processing allow the interplay of extraordinary lightness and volume.

Our cashmere – both solid and melange colors – is exclusively „top dyed“: in this elaborate dyeing technique, the fluffs are dyed before the yarn is spun. This makes the yarn more resistant. The combination with fine silk provides the subtle sheen and a delicate mouliné effect due to the intertwining of the two yarns.

Single-thread in a clean and super lightweight loose knit with drop needle fringed edges.



Multi-thread knitted in plain knit with full-patent details or in all-over full-patent for the turtle jumper.



## CARE

Loosely knitted parts are particularly soft and somewhat more demanding. Handle gently and avoid strong friction!

### WASHING

- 30°C
- wool wash
- machine wash
- separately or max. 1 – 3 pieces, which float loosely
- same materials
- similar colors
- only liquid detergent in low dosage
- recommendation: SMINFINITY Cashmere Care
- no bleaching agents
- no fabric softeners
- no full detergents
- do not leave in the wash water
- spin gently
- max. 400 @ rotations

### DRYING

- lying
- absorbent pad
- bring into shape previously
- not in the sun
- not on the heater
- dryer: max. 3 – 5 min. in wool finish program

### STEAMING

- ironing not necessary
- steamer recommended

### STORAGE

- natural fragrances (lavender or cedar wood) in the closet
- keep moths away

### PILLING

With loosely processed yarns with a brushed surface, individual delicate fibers can be loosened more easily and twist into small knots due to friction. But only through a loose processing the fibers unfold and the part becomes so wonderfully soft!

#### Prevent:

- Minimize risk of friction – e.g., do not wear heavy jackets with a rough inner lining

#### Remove:

- The gentlest way is to pluck the nodules by hand after washing (before the dryer) when damp.
- Cashmere combs are not recommended; only use them very carefully without too much pressure and lying on a smooth surface in the direction of the stitch. By using the comb, the roughened surface is somewhat refreshed and small knots can be removed.
- electric razor not recommended for brushed yarns

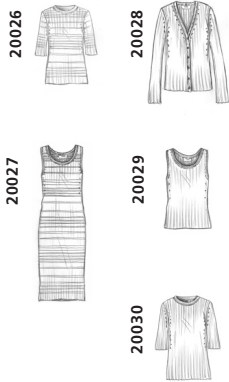
### QUALITY

Silk is one of the oldest and noblest natural fibers, spun by the larvae of the silk moth caterpillar. Extracting silk from the cocoons has always been as laborious as ever. About ten kilograms of cocoons are needed for one kilogram of raw silk. A cocoon consists of different layers of the thread, which can be up to 3000 meters long. Silk is the only textile continuous fiber occurring in nature, elastic, almost wrinkle-free and extremely tear-resistant.

The combination of the extremely fine, sensitive silk fiber with soft, combed cotton creates a yarn that is more stable and resistant – e.g. to drawing threads – despite its fineness.

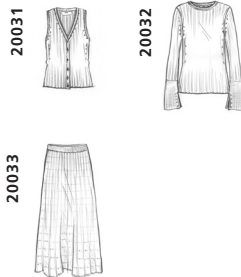
This clever combination convinces with a silky, noble shimmer – the cotton portion adds a touch of sportiness. Characteristic for the silk are small thread thickenings.

Dense 2x2 rib structure - finely knitted in one thread. The elastic rib always returns perfectly to its shape. Plain or with irregular all-over multicolour stripes.



© 600

Wide 4x4 rib structure - finely knitted in a single thread. The elastic rib always returns perfectly to its shape. With Full Milano details and Sunrib for the A skirt.



© 600

Single-thread Full Milano structure with clean edges and slit details. The time-consuming and costly knitting technique means it retains its shape particularly well.



© 600

### CARE

The knitted ribbed structures always return perfectly to their original shape and are easy to care for.

#### WASHING

- 30°C
- fine / silk wash
- machine wash
- wash inside out
- similar colors
- only liquid detergent in low dosage
- no bleaching agents (dark colors are particularly sensitive to fading)
- do not leave in the wash water
- spin gently
- max. 600© rotations

#### DRYING

- lying
- absorbent pad
- bring into shape previously
- not in the sun
- not on the heater
- dryer: max. 3 – 5 min. in wool finish program

#### STEAMING

- steamer recommended
- Full Milano structure + ribbed structures: ironing not necessary, at most gently from the left and preferably with a fine cotton cloth in between, at max. 110°C

## QUALITY

A soft quality made of finest Pima cotton and delicate cashmere. The queen of cotton – named after the Pima Indians – convinces with exceptional softness and silky sheen. Supima refers to fibers made from one hundred percent American Pima cotton. The name combines the words „Superior“ and „Pima“ and stands for a particularly high quality standard. The fibers of Supima cotton are particularly long staple, therefore knitted fabrics of this quality are very durable and yet particularly soft.

Dense 1x1 rib structure – knitted in one thread and very shape-retaining. The elasticated knit always returns to its shape perfectly – at the latest after washing.



© 600

## CARE

Easy to care for due to the cotton content, with the soft 2nd skin feel due to the addition of cashmere.

### WASHING

- 30°C
- wool wash
- machine wash
- separately or max. 2 – 3 pieces, which float loosely
- same materials
- similar colors
- only liquid detergent in low dosage
- recommendation: SMINFINITY Cashmere Care
- no bleaching agents
- no fabric softeners
- no full detergents
- do not leave in the wash water
- spin gently
- max. 600 © rotations

### DRYING

- Especially important:
- shape before drying, because cotton has a tendency to expand when wet
  - lying
  - absorbent pad
  - bring into shape previously
  - not in the sun
  - not on the heater
  - dryer: max. 3 – 5 min. in wool finish program

### STEAMING

- ironing not necessary
- at most gently from the left at max. 110°C
- steamer recommended

### PILLING

Prevent:

- Minimize risk of friction – e.g., do not wear heavy jackets with a rough inner lining

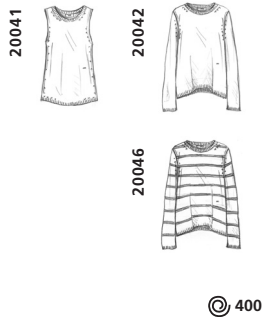
Remove:

- The gentlest way is to pluck the nodules by hand after washing (before the dryer) when damp.
- Cashmere combs are not recommended as they roughen the clean surface of this quality too much
- Only use the electric razor very carefully without applying too much pressure and lying flat on a smooth surface in the direction of the stitch
- Most knots disappear just by washing and during the drying process in the wool-finish program.

## QUALITY

A super soft, brushed yarn made from the highest quality cashmere from Inner Mongolia, combined with fine cotton. For the „blurry“ series, both qualities were twisted and then roughened by brushing. The roughened surface and a particularly airy-loose finish allow the interplay of extraordinary lightness and volume. All colors are „top dyed“ – in this elaborate dyeing technique, the flakes are dyed before the yarn is spun. This gives the yarn its subtle melange look and lively character, which is made even more expressive by the combination of cashmere and cotton. The combination with fine cotton brings a touch of sportiness and provides a subtle mouliné effect through the intertwining of the two yarn qualities.

Single-thread smooth knit with 1x1 rib details. Plain or in 2-colour stripe.



Two-ply plain knit with 1x1 rib details and placed tropic flower jaquard.



Knitted in multiple threads in an airy all-over rib ajour or as a full-patent with 2-colour stripe.



## CARE

Brushed yarns are somewhat more demanding in terms of care. The correct temperature and spin speed must be observed. A vigorous shaking out while still damp, before laying the model down to dry, loosens the structure.

### WASHING

- 20°C
- wool wash
- machine wash
- separately or max. 2 – 3 pieces, which float loosely
- same materials
- similar colors
- only liquid detergent in low dosage
- special wool detergents prevent felting or roughening of the surface during washing
- recommendation: SMINFINITY Cashmere Care
- no bleaching agents
- no fabric softeners
- no full detergents
- do not leave in the wash water
- spin gently
- max. 400 / 800 @rotations: See carelabel!

### DRYING

- lying
- absorbent pad
- bring into shape previously
- not in the sun
- not on the heater
- dryer: max. 3 – 5 min. in wool finish program

### STEAMING

- ironing not necessary
- at most gently from the left at max. 110°C
- steamer recommended

### STORAGE

- natural fragrances (lavender or cedar wood) in the closet keep moths away

### PILLING

With loosely processed yarns with a brushed surface, individual delicate fibers can be loosened more easily and twist into small knots due to friction. But only through a loose processing the fibers unfold and the part becomes so wonderfully soft!

#### Prevent:

- Minimize risk of friction – e.g., do not wear heavy jackets with a rough inner lining

#### Remove:

- The gentlest way is to pluck the nodules by hand after washing (before the dryer) when damp.
- Cashmere combs should only be used very carefully without too much pressure and lying on a smooth surface in the direction of the stitches. By using the comb, the roughened surface is somewhat refreshed and small knots can be removed.
- electric razor not recommended for brushed yarns
- Most knots disappear just by washing and during the drying process in the wool-finish program.

**QUALITY**

Cashmere from Inner Mongolia combined with high-quality cotton in a twisted yarn with a soft cashmere touch. More sporty in character and somewhat more durable due to the cotton content – but just as easy to care for as 100% cashmere. We have this comfortable combination spun especially for us, in our color combinations – unique SMINFINITY!

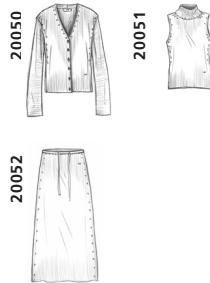
All colors are „top dyed“ – in this elaborate dyeing technique, the flakes are dyed before they are spun. The cashmere yarn is then twisted with the cotton. This creates the subtle mélange look and vibrant character.

Single-thread smooth knit with 1x1 rib details.



© 400

Dense all-over 1x1 rib structure with clean edges – knitted in one thread and shape retaining.



© 400

Tonal doubleface is one of the SMINFINITY specials. Puristic, modern with clean finishes.



© 800

Multi-thread knitted in a loose & tight structure, with 1x1 rib details.



© 800

**CARE**

Just as easy to care for as 100% cashmere – with just as long a life and feel-good guarantee.

**WASHING**

- 30°C
- wool wash
- machine wash
- separately or max. 2 – 3 pieces, which float loosely
- same materials
- similar colors
- close all buttons
- only liquid detergent in low dosage
- special wool detergents prevent felting or roughening of the surface during washing
- recommendation: SMINFINITY Cashmere Care
- no bleaching agents
- no fabric softeners
- no full detergents
- do not leave in the wash water
- spin gently
- max. 400 / 800 @rotations: See carelabel!

**DRYING**

- lying
- absorbent pad
- bring into shape previously
- not in the sun
- not on the heater
- dryer: max. 3 – 5 min. in wool finish program

**STEAMING**

- ironing not necessary
- at most gently from the left at max. 110°C
- steamer recommended - especially for coarser structures

**STORAGE**

- natural fragrances (lavender or cedar wood) in the closet
- keep moths away

**PILLING**

Prevent:

- Minimize risk of friction – e.g., do not wear heavy jackets with a rough inner lining

Remove:

- The gentlest way is to pluck the nodules by hand after washing (before the dryer) when damp.
- or remove with a cashmere comb carefully in the direction of the stitches (the comb roughens the surface somewhat – therefore only use carefully)
- electric razor not recommended (only for very smooth surface, such as the doubleface knit, so as not to damage the yarn structure – use without too much pressure and lying on a smooth surface in the direction of the stitch)
- Most knots disappear just by washing and during the drying process in the wool-finish program.



**QUALITY**

This summery terry yarn has a cool, soft feel and a loose structure similar to cotton terry – yet soft and light due to the cashmere content. Perfect for the relaxed beach feeling.

Single-thread, loose, smooth knit. Plain, with tropic flower intarsia or as an all-over 2-colour stripe.



**CARE**

The three-dimensional surface is always refreshed by washing and especially by the short time in the wool finish program of the dryer. Frequent washing is beneficial for the relief-like structure with this quality.

**WASHING**

- 30°C
- wool wash
- machine wash
- separately or max. 2 pieces, which float loosely
- same materials
- similar colors
- only liquid detergent in low dosage
- recommendation: SMINFINITY Cashmere Care
- no bleaching agents
- no fabric softeners
- no full detergents
- do not leave in the wash water
- spin gently
- max. 800 @ rotations

**DRYING**

- lying
- absorbent pad
- bring into shape previously
- not in the sun
- not on the heater
- dryer: max. 3 – 5 min. in wool finish program

**STEAMING**

- ironing not necessary
- at most gently from the left at max. 110°C
- steamer recommended

**STORAGE**

- natural fragrances (lavender or cedar wood) in the closet keep moths away

**PILLING**

Prevent:

- Minimize risk of friction – e.g., do not wear heavy jackets with a rough inner lining

Remove:

- The gentlest way is to pluck the nodules by hand after washing (before the dryer) when damp.
- electric razor comb not recommended for textured surfaces
- Most knots disappear just by washing and during the drying process in the wool-finish program.

## 100% PIMA COTTON

### QUALITY

The queen of cotton – named after the Pima Indians – convinces with extraordinary softness and silky sheen. In the river valleys of Peru, the valuable Pima cotton – the „silk of South America“ – finds its perfect growing conditions and is gently harvested and sorted by hand. The special fineness and fiber length (35 mm compared to 13 – 19 mm for normal cotton fibers) gives the Peruvian Pima cotton its natural silky sheen, the super soft handle and its stability and durability.

Single-thread knitted in a fine full needle plissée structure – with volants for volume and summery lightness.



### CARE

After washing, lay the clean styles well into the desired shape for the drying process. The relief-like, three-dimensional surface of the plissée structure is knitted in and thus permanent – even after washing.

#### WASHING

- 30°C
- wool wash
- machine wash
- separately or max. 2 –3 pieces, which float loosely
- same materials
- similar colors
- only liquid detergent in low dosage
- recommendation: SMINFINITY Cashmere Care
- no bleaching agents
- no fabric softeners
- no full detergents
- do not leave in the wash water
- spin gently
- max. 600 © rotations

#### DRYING

- lying
- absorbent pad
- bring into shape previously
- not in the sun
- not on the heater
- dryer: max. 3 – 5 min. in wool finish program

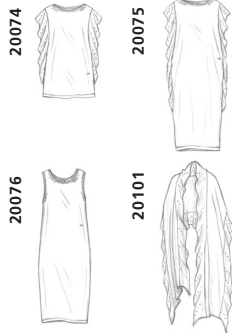
#### STEAMING

- Do not iron plissée
- Steamer recommended

## QUALITY

An attractive combination: cooling linen with high-quality cotton - the advantages of both fibres combined in one yarn. Linen has a long history: as the oldest fibre used in the manufacture of clothing, it still stands for long-lasting quality today. Elaborate processing techniques are required to extract the fibres from the stalks of the flax plant. Linen is characterised by excellent climate-regulating properties: it is cooling, air-permeable and moisture-regulating - ideal for summer! The linen fibre traps little air - so linen is lint-free and less susceptible to dirt and bacteria, the fibre is naturally bacteriocidal, almost antistatic and dirt-repellent, and the combination of linen fibre with soft combed cotton produces a yarn that is very robust and hard-wearing despite its fineness. Linen is characterised by small thread thickenings.

Single-thread fine knit in a clean, ribbed knit with expressive knitted ruffle details.



© 600

## CARE

The ruffles retain their volume even after washing and are easy to care for.

### WASHING

- 30°C
- wool wash
- machine wash
- separately or max. 2 -3 pieces, which float loosely
- same materials
- similar colors
- only liquid detergent in low dosage
- no bleaching agents
- no fabric softeners
- no full detergents
- do not leave in the wash water
- spin gently
- max. 600 @ rotations

### DRYING

- lying
- absorbent pad
- bring into shape previously
- not in the sun
- not on the heater
- dryer: max. 3 - 5 min. in wool finish program

### STEAMING

- ironing not necessary
- at most gently from the left at max. 110°C
- Do not iron ruffles
- Steamer recommended

# SMINFINITY

QUALITY + CARE

100% SUPERIOR COTTON – TAPE YARN

## QUALITY

For this high-quality hand knitting yarn from Italy, the finest cotton is processed into a flat, complex ribbon yarn. Knitted in single-ply on thick needles by our Hamburg-based hand knitters.

**HANDKNIT** The airy ribbon yarn is knitted smoothly by hand on thick needles. Horizontal textured stripes create a summery look.

20073



## CARE

To preserve the shape of this hand-knitted style, we recommend dry cleaning. Cleaning is not necessary after every wear, even airing out the garment will keep it fresh.

# SMINFINITY

QUALITY + CARE

## CASHMERE CARE

We recommend our SMINFINITY Cashmere Care, which was specially developed for cashmere and cashmere blends. As it is particularly gentle and gentle, it can also be used well for all other qualities. Gently cares and cleans and prevents felting or roughening of the knitted surface during washing.



CASHMERE CARE	CASHMERE CARE	CASHMERE COMB
6 / 12 / 24 pcs	6 / 12 / 24 pcs	10 pcs
50 ml	240 ml	
Art.Nr. 20301	Art.Nr. 20302	Art.Nr. 20303
UVP: 6,00 EUR / pc	UVP: 14,00 EUR / pc	UVP: 6,00 EUR / pc