

SMINFINITY

QUALITY + CARE

SPRING SUMMER 2023 | LIGHTNESS



SMINFINITY celebrates the lightness of being. This universal idea of longing hovers over the Spring Summer 2023 collection and is interpreted in subtle facets. A lightfilled, soft colour mood with pastel nuances and luminous accents reflects the relaxed serenity of a light summer breeze. Graphics and objects by artist Dorothee Pfeifer inspire to organic-floral elements and structures.

www.sminfinity.de
www.atelier-pfeifer.de

QUALITY

The origin of the queen of fibers is close to the clouds: At an altitude of up to 4000 meters, cashmere goats live in a climate to which their coat is precisely adapted. In addition to the long outer coat, they have a particularly fine, soft undercoat, which is close to the body, soft and warm.

It is only from these precious hairs of the undercoat that the cashmere wool is carefully combed out, collected and sorted by hand. A cashmere goat yields only 100 to 200 grams of fiber per year.

Cashmere is uniquely fine and light (fiber diameter 15 – 19 microns – 1/6th of a human hair), yet warming, temperature balancing, wrinkle resistant and odor neutralizing. Since the fiber is naturally stain resistant, high temperatures are not necessary when washing.

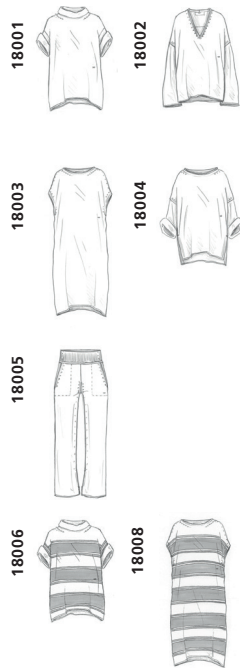
Our cashmere – both solid colors and melange – is exclusively „top dyed“: in this elaborate dyeing technique, the flocks are dyed before the yarn is spun. This makes the yarn more resistant.

We use a high-quality classic two-ply yarn, which is therefore form-stable and less prone to pilling. Processed in some styles as a multi-threaded cablé yarn – even more robust and with a clear stitch pattern due to the stronger twisting.

With us, cashmere is always knitted in shape („Fully Fashion“) and never cut. Thus, none of the precious raw material is wasted – sustainably and consistently.

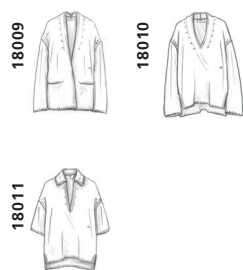
Fully Fashion marks are therefore a factor for high-quality production and not a knitting defect.

The »pure« series: one-thread knitted for clean smooth knitting with fine roll edges. Plain or with two color stripe.



© 400

Two-thread in puristic smooth knit, with clean selfedges.



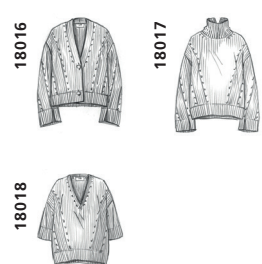
© 400

Two-thread knitted in full patent with raglan sleeves. Plain or with placed two color stripe.



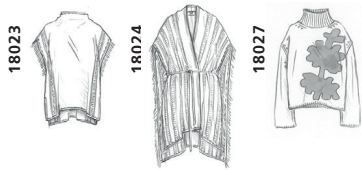
© 400

Multi-thread knitted in half-patent – for our »icon« styles – with the typical, elaborately placed Fully Fashion details.



© 800

Air Tape – developed with our yarn supplier: the classic yarn worked into an airy, round ribbon yarn. Then knitted in a coarse stitch with a single yarn: Lightness and volume – in a clean smooth knit summery broken through placed drop needle details and fringe edges or knitted as a two-color intarsia.



© 800

HANDKNIT The knitted Air Tape knitted by hand two-thread in openwork ajour.



© 800

CARE

With proper care, a cashmere sweater will last a lifetime. Caring for cashmere properly is uncomplicated. It only requires a little care.

WASHING

- 30°C
- wool wash
- machine wash
- separately or max. 1 – 3 pieces, which float loosely
- same materials
- similar colors
- close all buttons
- only liquid detergent in low dosage
- special wool detergents prevent felting or roughening of the surface during washing
- recommendation: SMINFINITY Cashmere Care
- no bleaching agents
- no fabric softeners
- no full detergents
- do not leave in the wash water
- spin gently
- max. 400 / 800 © rotations: See carelabel! (The spin speed varies depending on the knitted fabric – the coarser, the more moisture must be spun out after washing to keep the model from losing its shape).

DRYING

- lying
- absorbent pad
- bring into shape previously
- not in the sun
- not on the heater
- dryer: max. 3 – 5 min. in wool finish program

STEAMING

- ironing not necessary
- at most gently from the left at max. 110°C
- steamer recommended – especially for coarser structures

STORAGE

- natural fragrances (lavender or cedar wood) in the closet keep moths away

PILLING

Prevent:

- Minimize risk of friction – e.g., do not wear heavy jackets with a rough inner lining

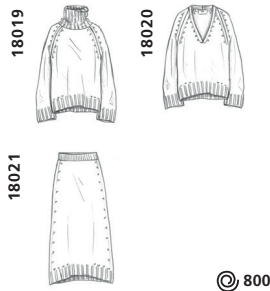
Remove:

- The gentlest way is to pluck the nodules by hand after washing (before the dryer) when damp.
- or remove with a cashmere comb carefully in the direction of the stitches (the comb roughens the surface somewhat – therefore only use carefully)
- electric razor not recommended (only for very smooth surface, so as not to damage the yarn structure – use without too much pressure and lying on a smooth surface in the direction of the stitch)
- Most knots disappear just by washing and during the drying process in the wool-finish program.

QUALITY

An incredibly soft, Italian cashmere / cotton bouclé yarn, which convinces not only by the soft touch but also by a very light feel. The high cotton content in combination with the high-quality cashmere is thus durable and easy to care for. The bouclé structure and a loose processing give the yarn a voluminous-light character.

Single-thread plain knit with 2x2 rib details.



CARE

This easy-care, soft bouclé yarn should be carefully brought into the desired shape again for drying, so that it does not lose its shape through the drying process.

WASHING

- 30°C
- wool wash
- machine wash
- separately or max. 2 – 3 pieces, which float loosely
- same materials
- similar colors
- only liquid detergent in low dosage
- recommendation: SMINFINITY Cashmere Care
- no bleaching agents
- no fabric softeners
- no full detergents
- do not leave in the wash water
- spin gently
- max. 800 @ rotations

DRYING

- lying
- absorbent pad
- bring into shape previously
- not in the sun
- not on the heater
- dryer: max. 3 – 5 min. in wool finish program

STEAMING

- ironing not necessary
- Steamer recommended to maintain the bouclé surface.

STORAGE

- natural fragrances (lavender or cedar wood) in the closet
- keep moths away

PILLING

Prevent:

- Minimize risk of friction – e.g., do not wear heavy jackets with a rough inner lining

Remove:

- The gentlest way is to pluck the nodules by hand after washing (before the dryer) when damp.
- electric razor not recommended
- Most knots disappear just by washing and during the drying process in the wool-finish program.

QUALITY

Silk is one of the oldest and noblest natural fibers, spun by the larvae of the silk moth caterpillar. Extracting silk from the cocoons has always been as laborious as ever. About ten kilograms of cocoons are needed for one kilogram of raw silk. A cocoon consists of different layers of the thread, which can be up to 3000 meters long. Silk is the only textile continuous fiber occurring in nature, elastic, almost wrinkle-free and extremely tear-resistant.

The combination of the extremely fine, sensitive silk fiber with soft, combed cotton creates a yarn that is more stable and resistant – e.g. to drawing threads – despite its fineness.

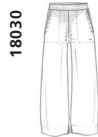
This clever combination convinces with a silky, noble shimmer – the cotton portion adds a touch of sportiness. Characteristic for the silk are small thread thickenings.

Knit-in fine plissé – flowing light with a hint of silk sheen. With Full Milano details for collars and cuffs and placed drawstring details for gathering.



© 600

Single yarn as Full Milano structure with clean edges. Due to the time-consuming and expensive knitting method particularly dimensionally stable.



© 600

CARE

The relief-like, three-dimensional surface of the plissé is knitted in and thus permanent – even after washing.

WASHING

- 30°C
- fine / silk wash
- machine wash
- wash inside out
- similar colors
- only liquid detergent in low dosage
- no bleaching agents (dark colors are particularly sensitive to fading)
- do not leave in the wash water
- spin gently
- max. 600 © rotations

DRYING

- lying
- absorbent pad
- bring into shape previously
- not in the sun
- not on the heater
- dryer: max. 3 – 5 min. in wool finish program

STEAMING

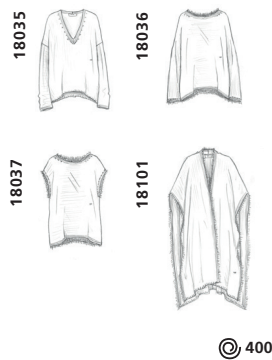
- do not iron plissé steamer recommended
- Full Milano structure: ironing not necessary, at most gently from the left at max. 110°C

QUALITY

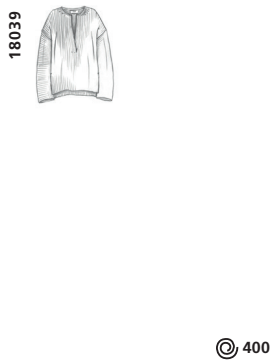
A super soft, brushed yarn made from the highest quality cashmere from Inner Mongolia, combined with the finest silk. For the „fluffy“ series, both qualities were twisted and then roughened by brushing. The roughened surface and a particularly airy-loose processing allow the interplay of extraordinary lightness and volume.

Our cashmere – both solid and melange colors – is exclusively „top dyed“: in this elaborate dyeing technique, the fluffs are dyed before the yarn is spun. This makes the yarn more resistant. The combination with fine silk provides the subtle sheen and a delicate mouliné effect due to the intertwining of the two yarns.

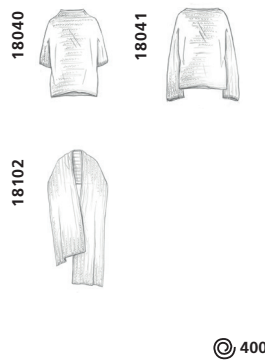
Single thread knitted in clean and super light-weight plain loose knit. With clean edges or drop needle fringes.



Two-thread knitted in full patent with clean finishes.



Multi-thread knitted in allover rib ajour – semi-transparent due to the combination of rib knit and airy openwork ajour.



CARE

Loosely knitted parts are particularly soft and somewhat more demanding. Handle gently and avoid strong friction!

WASHING

- 30°C
- wool wash
- machine wash
- separately or max. 1 – 3 pieces, which float loosely
- same materials
- similar colors
- only liquid detergent in low dosage
- special wool detergents prevent felting or roughening of the surface during washing
- recommendation: SMINFINITY Cashmere Care
- no bleaching agents
- no fabric softeners
- no full detergents
- do not leave in the wash water
- spin gently
- max. 400 @rotations

DRYING

- lying
- absorbent pad
- bring into shape previously
- not in the sun
- not on the heater
- dryer: max. 3 – 5 min. in wool finish program

STEAMING

- ironing not necessary
- steamer recommended

STORAGE

- natural fragrances (lavender or cedar wood) in the closet keep moths away

PILLING

With loosely processed yarns with a brushed surface, individual delicate fibers can be loosened more easily and twist into small knots due to friction. But only through a loose processing the fibers unfold and the part becomes so wonderfully soft!

Prevent:

- Minimize risk of friction – e.g., do not wear heavy jackets with a rough inner lining

Remove:

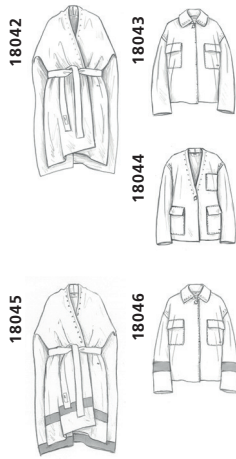
- The gentlest way is to pluck the nodules by hand after washing (before the dryer) when damp.
- cashmere comb not recommended for these structures, for the smooth knitted styles: insert carefully in the direction of the stitches (by using the comb the roughened surface will be refreshed a little)
- electric razor not recommended for brushed yarns

QUALITY

Cashmere from Inner Mongolia combined with high-quality cotton in a yarn with a soft cashmere touch. More sporty in character and somewhat more durable due to the cotton content – but just as easy to care for as 100% cashmere. We have this comfortable combination spun especially for us, in our color combinations – unique SMINFINITY!

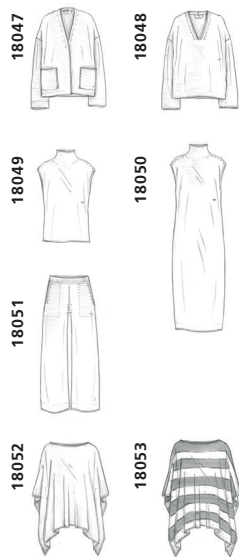
All colors are „top dyed“ – in this elaborate dyeing technique, the flakes are dyed before the yarn is spun. This gives the yarns their subtle melange look and lively character, which is made even more expressive by the combination of cashmere and cotton.

Tonal Doubleface belongs to the SMINFINITY Specials. Puristic, modern with clean finishes. Plain or with placed contrasting stripes.



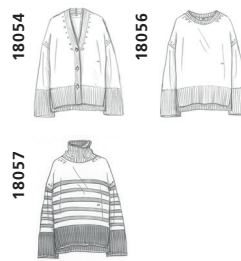
© 800

Fine, grainy left-left structure – single-thread knitted and shape-retaining. Plain or as two color stripe.



© 400

Multi-thread smooth knitted „slouchy“ styles – with startings in full patent. Plain or with two color stripe.



© 400

CARE

Just as easy to care for as 100% cashmere – with just as long a life and feel-good guarantee.

WASHING

- 30°C
- wool wash
- machine wash
- separately or max. 2 – 3 pieces, which float loosely
- same materials
- similar colors
- close all buttons
- only liquid detergent in low dosage
- special wool detergents prevent felting or roughening of the surface during washing
- recommendation: SMINFINITY Cashmere Care
- no bleaching agents
- no fabric softeners
- no full detergents
- do not leave in the wash water
- spin gently
- max. 400 / 800@rotations: See carelabel! (The spin speed varies depending on the knitted fabric – the coarser, the more moisture must be spun out after washing to keep the model from losing its shape).

DRYING

- lying
- absorbent pad
- bring into shape previously
- not in the sun
- not on the heater
- dryer: max. 3 – 5 min. in wool finish program

STEAMING

- ironing not necessary
- at most gently from the left at max. 110°C
- steamer recommended

STORAGE

- natural fragrances (lavender or cedar wood) in the closet keep moths away

PILLING

Prevent:

- Minimize risk of friction – e.g., do not wear heavy jackets with a rough inner lining

Remove:

- The gentlest way is to pluck the nodules by hand after washing (before the dryer) when damp.
- or remove with a cashmere comb carefully in the direction of the stitches (the comb roughens the surface somewhat – therefore only use carefully)
- electric razor not recommended (only for very smooth surface, such as the doubleface knit, so as not to damage the yarn structure – use without too much pressure and lying on a smooth surface in the direction of the stitch)
- Most knots disappear just by washing and during the drying process in the wool-finish program.

QUALITY

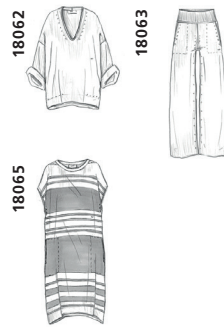
A soft quality made of finest Pima cotton and delicate cashmere. The queen of cotton – named after the Pima Indians – convinces with exceptional softness and silky sheen. Supima refers to fibers made from one hundred percent American Pima cotton. The name combines the words „Superior“ and „Pima“ and stands for a particularly high quality standard. The fibers of Supima cotton are particularly long staple, therefore knitted fabrics of this quality are very durable and yet particularly soft.

Single-thread smooth knit with 1x1 rib details. Plated with one thread of elastane.



© 600

Dense 1x1 rib structure – single-thread knitted and very shape-retaining. The elastic knit always returns perfectly to its shape – at the latest after washing. Plain or with irregular two color stripes.



© 600

CARE

Easy to care for due to the cotton content, with the soft 2nd skin feel due to the addition of cashmere.

WASHING

- 30°C
- wool wash
- machine wash
- separately or max. 2 – 3 pieces, which float loosely
- same materials
- similar colors
- only liquid detergent in low dosage
- recommendation:
SMINFINITY Cashmere Care
- no bleaching agents
- no fabric softeners
- no full detergents
- do not leave in the wash water
- spin gently
- max. 600 © rotations

DRYING

- Especially important:
- shape before drying, because cotton has a tendency to expand when wet
 - lying
 - absorbent pad
 - bring into shape previously
 - not in the sun
 - not on the heater
 - dryer: max. 3 – 5 min. in wool finish program

STEAMING

- ironing not necessary
- at most gently from the left at max. 110°C
- steamer recommended

PILLING

Prevent:

- Minimize risk of friction – e.g., do not wear heavy jackets with a rough inner lining

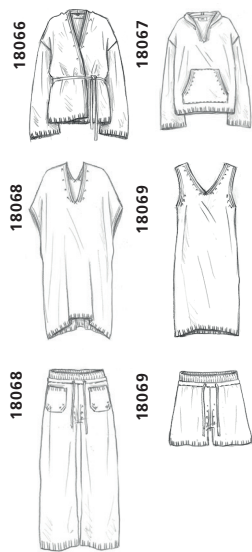
Remove:

- The gentlest way is to pluck the nodules by hand after washing (before the dryer) when damp.
- electric razor comb not recommended
- Most knots disappear just by washing and during the drying process in the wool-finish program.

QUALITY

This summery terry yarn has a cool, soft feel and a loose structure similar to terry – yet soft and light due to the cashmere content. Perfect for the relaxed beach feeling.

Single-thread, loose smooth knit with 2x2 rib details.



© 800

CARE

The three-dimensional surface is always refreshed by washing and especially by the short time in the wool finish program of the dryer. Frequent washing is beneficial for the relief-like structure with this quality.

WASHING

- 30°C
- wool wash
- machine wash
- separately or max. 2 pieces, which float loosely
- same materials
- similar colors
- only liquid detergent in low dosage
- recommendation: SMINFINITY Cashmere Care
- no bleaching agents
- no fabric softeners
- no full detergents
- do not leave in the wash water
- spin gently
- max. 800 © rotations

DRYING

- lying
- absorbent pad
- bring into shape previously
- not in the sun
- not on the heater
- dryer: max. 3 – 5 min. in wool finish program

STEAMING

- ironing not necessary
- at most gently from the left at max. 110°C
- steamer recommended

STORAGE

- natural fragrances (lavender or cedar wood) in the closet
- keep moths away

PILLING

Prevent:

- Minimize risk of friction – e.g., do not wear heavy jackets with a rough inner lining

Remove:

- The gentlest way is to pluck the nodules by hand after washing (before the dryer) when damp.
- electric razor comb not recommended for textured surfaces
- Most knots disappear just by washing and during the drying process in the wool-finish program.

100% PIMA COTTON

QUALITY

The queen of cotton – named after the Pima Indians – convinces with extraordinary softness and silky sheen. In the river valleys of Peru, the valuable Pima cotton – the „silk of South America“ – finds its perfect growing conditions and is gently harvested and sorted by hand. The special fineness and fiber length (35 mm compared to 13 – 19 mm for normal cotton fibers) gives the Peruvian Pima cotton its natural silky sheen, the super soft handle and its stability and durability.

Single-thread knitted in a fine smooth knit – flowing light.



© 600

Single-thread knitted in a dense 1x1 rib structure – very shape-retaining and with clean edges.



© 600

Single-thread and fine knitted, multi-step full needle pleats in different widths – flowing light and opaque.



© 600

CARE

After washing, lay the clean styles well into the desired shape for the drying process. The relief-like, three-dimensional surface of the pleats is knitted in and thus permanent – even after washing.

WASHING

- 30°C
- wool wash
- machine wash
- separately or max. 2 –3 pieces, which float loosely
- same materials
- similar colors
- only liquid detergent in low dosage
- recommendation: SMINFINITY Cashmere Care
- no bleaching agents
- no fabric softeners
- no full detergents
- do not leave in the wash water
- spin gently
- max. 600 © rotations

DRYING

- lying
- absorbent pad
- bring into shape previously
- not in the sun
- not on the heater
- dryer: max. 3 – 5 min. in wool finish program

STEAMING

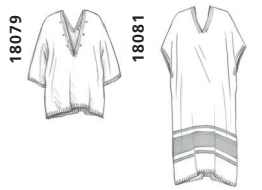
- Ironing of the clean styles not necessary. At most gently from the left at max. 110°C.
- Do not iron pleats
- Steamer recommended

100% COTTON

QUALITY

A flame yarn made from the highest quality cotton – with characteristic thread thickenings created at regular intervals during the spinning process. With summery cool handle and robust, pithy surface.

Single-thread smooth knitted with 1x1 rib details. Plain or with placed two color stripe.



© 800

CARE

After washing, place the styles well in the desired shape for the drying process.

WASHING

- 30°C
- wool wash
- machine wash
- separately or max. 2 –3 pieces, which float loosely
- same materials
- similar colors
- only liquid detergent in low dosage
- no bleaching agents
- no fabric softeners
- no full detergents
- do not leave in the wash water
- spin gently
- max. 800 © rotations

DRYING

- lying
- absorbent pad
- bring into shape previously
- not in the sun
- not on the heater
- dryer: max. 3 – 5 min. in wool finish program

STEAMING

- Ironing not necessary
- Steamer recommended

80% COTTON | 20% POLYAMIDE

QUALITY

For this high-quality hand knitting yarn from Italy, the finest cotton is processed into a complex, airy ribbon yarn. Knitted by hand in two strands, it appears voluminous and yet with a summery character.

HANDKNIT The airy ribbon yarn is knitted smoothly by hand on thick needles. Horizontal structure stripes provide a summery look.



© 800

CARE

WASHING

- 30°C
- wool wash
- machine wash
- separately or max. 2 – 3 pieces, which float loosely
- same materials
- similar colors
- only liquid detergent in low dosage
- no bleaching agents
- no fabric softeners
- no full detergents
- do not leave in the wash water
- spin gently
- max. 800 @ rotations

DRYING

- lying
- absorbent pad
- bring into shape previously
- not in the sun
- not on the heater
- dryer: max. 3 – 5 min. in wool finish program

STEAMING

- Ironing not necessary
- Steamer recommended

SMINFINITY

QUALITY + CARE

CASHMERE CARE

We recommend our SMINFINITY Cashmere Care, which has been specially developed for cashmere and cashmere blends. Gently cares and cleans and prevents felting or roughening of the knitted surface during washing.



CASHMERE CARE	CASHMERE CARE	CASHMERE COMB
6 / 12 / 24 pcs	6 / 12 / 24 pcs	10 pcs
50 ml	240 ml	
Art.Nr. 18301	Art.Nr. 18302	Art.Nr. 18303
UVP: 6,00 EUR / pc	UVP: 14,00 EUR / pc	UVP: 6,00 EUR / pc