

SMINFINITY

QUALITY + CARE

AUTUMN WINTER 2023 2024 | CONTRAST



As opposite as two poles are – they both depend on each other. Without night – no day. Without black – no white. The SMINFINITY Autumn | Winter Collection 2023 | 24 moves between tensioned polarities. A complementary play with contrasts – of brightness, structures, shapes, colours – balanced in every detail.

www.sminfinity.de

100% SUPERFINE MERINO WOOL 120'S

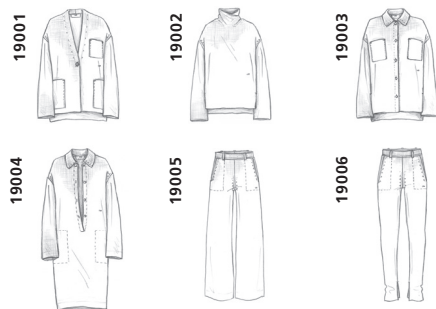
QUALITY

Pure, high-quality merino wool, produced using worsted spinning – for a smooth, soft feel with a clean surface. The fiber length of 120 mm indicates the special fineness and softness of the fiber – twisted as a 2-ply in S-direction.

The colours are exclusively „top dyed“: in this elaborate dyeing technique, the flocks are dyed before the yarn is spun. This makes the yarn more resistant compared to strand dyeing, where the already spun yarn is dyed in the strand.

Fine Full Milano structures – due to the knitting method particularly dimensionally stable, with clean finishes – for a purist modern look.

(Full Milano is a particularly elaborate and expensive knitting type with high yarn consumption – the knitting machine knits twice as long as for plain knit).



© 800

Single-thread plain knit, knitted flowing and soft or plated with a thread of elastane for special elasticity and shape retention.



© 800

CARE

Merino wool is basically easy to care for and does not need to be washed after every wear. Sometimes airing out is enough to ensure freshness.

WASHING

- 30°C
- wool wash
- machine wash
- separately or max. 2 – 3 pieces, which float loosely
- same materials
- similar colors
- only liquid detergent in low dosage
- recommendation: SMINFINITY Cashmere Care
- no bleaching agents
- no fabric softeners
- no full detergents
- do not leave in the wash water
- spin gently
- max. 800 @rotations

DRYING

- lying
- absorbent pad
- bring into shape previously
- not in the sun
- not on the heater
- dryer: max. 3 – 5 min. in wool finish program

STEAMING

- ironing not necessary
- at most gently from the left at max. 110°C
- Steamer recommended

STORAGE

- natural fragrances (lavender or cedar wood) in the closet
- keep moths away

PILLING

Prevent:

- Minimize risk of friction – e.g., do not wear heavy jackets with a rough inner lining

Remove:

- The gentlest way is to pluck the nodules by hand after washing (before the dryer) when damp.
- electric razor not recommended (only insert very carefully without too much pressure and lying on a smooth surface in the direction of the mesh)
- Most knots disappear just by washing and during the drying process in the wool-finish program.

QUALITY

A loosely twisted two-ply mouliné yarn from a renowned Italian yarn manufacturer. Two contrasting colored ribbon yarns are twisted - light volume combined with an impressive visual effect in a contrasting black + white look.

HANDKNIT Knitted by our Hamburg hand knitters on thick needles. The scarf is provided with hand-twisted fringes.



CARE

The quality is basically easy to care for and the styles do not need to be washed after every wear. Sometimes airing out is enough to provide freshness.

WASHING

- 30°C
- wool wash
- machine wash
- separately
- only liquid detergent in low dosage
- recommendation: SMINFINITY Cashmere Care
- no bleaching agents
- no fabric softeners
- no full detergents
- do not leave in the wash water
- spin gently
- max. 800 @rotations

DRYING

- lying
- absorbent pad
- bring into shape previously
- not in the sun
- not on the heater
- dryer: max. 3 – 5 min. in wool finish program

STEAMING

- ironing not necessary
- Steamer recommended

STORAGE

- natural fragrances (lavender or cedar wood) in the closet
- keep moths away

PILLING

Prevent:

- Minimize risk of friction – e.g., do not wear heavy jackets with a rough inner lining

Remove:

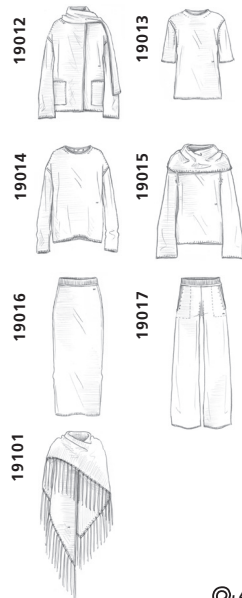
- The gentlest way is to pluck the nodules by hand after washing (before the dryer) when damp.
- electric razor not recommended
- Most knots disappear just by washing and during the drying process in the wool-finish program.

QUALITY

Cashmere from Inner Mongolia combined with high-quality cotton in a twisted yarn with a soft cashmere touch. More sporty in character and somewhat more durable due to the cotton content – but just as easy to care for as 100% cashmere. We have this comfortable combination spun especially for us, in our color combinations – unique SMINFINITY!

All colors are „top dyed“ – in this elaborate dyeing technique, the flakes are dyed before they are spun. The cashmere yarn is then twisted with the cotton. This creates the subtle mélange look and vibrant character.

Fine, grainy left-left structure - single-thread knitted and shape retaining. The triangle scarf with hand-knotted fringes from the **Air Tape**.



© 400

Tonal doubleface belongs to the SMINFINITY Specials. Puristic, modern with clean finishes.



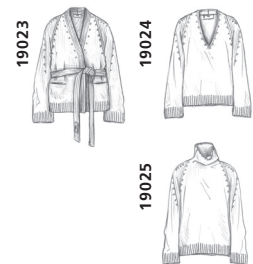
© 800

Two strand full patent knit „slouchy“ rib styles.



© 400

Air Tape – developed with our yarn supplier: the classic yarn is made into an airy, round ribbon yarn. Then knitted in a coarse stitch with a single thread: Lightness and volume – combined in clean smooth knit with elaborately placed Fully Fashion and 1x1 rib details.



© 800

CARE

Just as easy to care for as 100% cashmere – with just as long a life and feel-good guarantee.

WASHING

- 30°C
- wool wash
- machine wash
- separately or max. 2 – 3 pieces, which float loosely
- same materials
- similar colors
- close all buttons
- only liquid detergent in low dosage
- special wool detergents prevent felting or roughening of the surface during washing
- recommendation: SMINFINITY Cashmere Care
- no bleaching agents
- no fabric softeners
- no full detergents
- do not leave in the wash water
- spin gently
- max. 400 / 800 @rotations: See carelabel! (The spin speed varies depending on the knitted fabric – the coarser, the more moisture must be spun out after washing to keep the model from losing its shape).

DRYING

- lying
- absorbent pad
- bring into shape previously
- not in the sun
- not on the heater
- dryer: max. 3 – 5 min. in wool finish program

STEAMING

- ironing not necessary
- at most gently from the left at max. 110°C
- steamer recommended - especially for coarser structures

STORAGE

- natural fragrances (lavender or cedar wood) in the closet keep moths away

PILLING

Prevent:

- Minimize risk of friction – e.g., do not wear heavy jackets with a rough inner lining

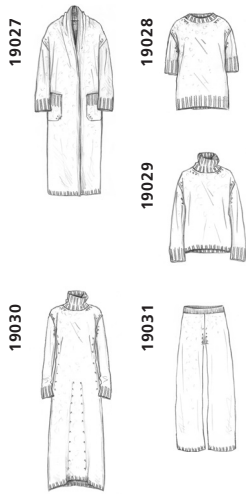
Remove:

- The gentlest way is to pluck the nodules by hand after washing (before the dryer) when damp.
- or remove with a cashmere comb carefully in the direction of the stitches (the comb roughens the surface somewhat – therefore only use carefully)
- electric razor not recommended (only for very smooth surface, such as the doubleface knit, so as not to damage the yarn structure – use without too much pressure and lying on a smooth surface in the direction of the stitch)
- Most knots disappear just by washing and during the drying process in the wool-finish program.

QUALITY

An incredibly soft, Italian cashmere / cotton bouclé yarn, which convinces not only by the soft touch but also by a very light feel. The high cotton content in combination with the high-quality cashmere is thus durable and easy to care for. The bouclé structure and a loose processing give the yarn a voluminous-light character.

Single-thread smooth knit with 2x2 rib details.



© 800

CARE

This easy-care, soft bouclé yarn should be carefully brought into the desired shape again for drying, so that it does not lose its shape through the drying process.

WASHING

- 30°C
- wool wash
- machine wash
- separately or max. 2 – 3 pieces, which float loosely
- same materials
- similar colors
- only liquid detergent in low dosage
- recommendation: SMINFINITY Cashmere Care
- no bleaching agents
- no fabric softeners
- no full detergents
- do not leave in the wash water
- spin gently
- max. 800 @ rotations

DRYING

- lying
- absorbent pad
- bring into shape previously
- not in the sun
- not on the heater
- dryer: max. 3 – 5 min. in wool finish program

STEAMING

- ironing not necessary
- Steamer recommended to maintain the bouclé surface.

STORAGE

- natural fragrances (lavender or cedar wood) in the closet keep moths away

PILLING

Prevent:

- Minimize risk of friction – e.g., do not wear heavy jackets with a rough inner lining

Remove:

- The gentlest way is to pluck the nodules by hand after washing (before the dryer) when damp.
- electric razor not recommended
- Most knots disappear just by washing and during the drying process in the wool-finish program.

QUALITY

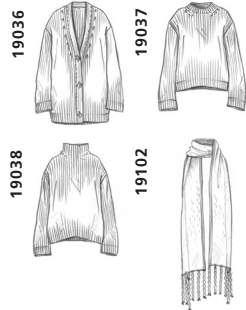
A super soft, brushed yarn made from the highest quality cashmere from Inner Mongolia, combined with fine cotton. For the „blurry“ series, both qualities were twisted and then roughened by brushing. The roughened surface and a particularly airy-loose finish allow the interplay of extraordinary lightness and volume. All colors are „top dyed“ – in this elaborate dyeing technique, the flakes are dyed before the yarn is spun. This gives the yarn its subtle melange look and lively character, which is made even more expressive by the combination of cashmere and cotton. The combination with fine cotton brings a touch of sportiness and provides a subtle mouliné effect through the intertwining of the two yarn qualities.

Two-thread smooth knitted with 1x1 rib details. Plain or in contrasting black + white stripe.



© 400

Multi-thread knitted in a half-patent or as a loose plain knit with hand-twisted fringes for the scarf.



© 800

CARE

Brushed yarns are somewhat more demanding in terms of care. The correct temperature and spin speed must be observed. A vigorous shaking out while still damp, before laying the model down to dry, loosens the structure.

WASHING

- 20°C
- wool wash
- machine wash
- separately or max. 2 – 3 pieces, which float loosely
- same materials
- similar colors
- close all buttons
- only liquid detergent in low dosage
- special wool detergents prevent felting or roughening of the surface during washing
- recommendation: SMINFINITY Cashmere Care
- no bleaching agents
- no fabric softeners
- no full detergents
- do not leave in the wash water
- spin gently
- max. 400 / 800 @rotations: See carelabel!

DRYING

- lying
- absorbent pad
- bring into shape previously
- not in the sun
- not on the heater
- dryer: max. 3 – 5 min. in wool finish program

STEAMING

- ironing not necessary
- at most gently from the left at max. 110°C
- steamer recommended

STORAGE

- natural fragrances (lavender or cedar wood) in the closet
- keep moths away

PILLING

With loosely processed yarns with a brushed surface, individual delicate fibers can be loosened more easily and twist into small knots due to friction. But only through a loose processing the fibers unfold and the part becomes so wonderfully soft!

Prevent:

- Minimize risk of friction – e.g., do not wear heavy jackets with a rough inner lining

Remove:

- The gentlest way is to pluck the nodules by hand after washing (before the dryer) when damp.
- Cashmere combs should only be used very carefully without too much pressure and lying on a smooth surface in the direction of the stitches. By using the comb, the roughened surface is somewhat refreshed and small knots can be removed.
- electric razor not recommended for brushed yarns
- Most knots disappear just by washing and during the drying process in the wool-finish program.

QUALITY

Silk is one of the oldest and noblest natural fibers, spun by the larvae of the silk moth caterpillar. Extracting silk from the cocoons has always been as laborious as ever. About ten kilograms of cocoons are needed for one kilogram of raw silk. A cocoon consists of different layers of the thread, which can be up to 3000 meters long. Silk is the only textile continuous fiber occurring in nature, elastic, almost wrinkle-free and extremely tear-resistant.

The combination of the extremely fine, sensitive silk fiber with soft, combed cotton creates a yarn that is more stable and resistant – e.g. to drawing threads – despite its fineness.

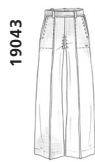
This clever combination convinces with a silky, noble shimmer – the cotton portion adds a touch of sportiness. Characteristic for the silk are small thread thickenings.

Single-thread fine and smooth knitted or in dense elastic 1x1 rib with clean edges. Plain or with placed two color stripe.



© 600

Single-thread as Full Milano structure with clean edges. Due to the time-consuming and costly knitting method particularly shape-retaining.



© 600

CARE

With the right wash cycle – fine / silk – the color and surface will be preserved in the long term. Do not wash in wool wash cycle!

WASHING

- 30°C
- fine / silk wash
- machine wash
- wash inside out
- similar colors
- only liquid detergent in low dosage
- no bleaching agents (dark colors are particularly sensitive to fading)
- do not leave in the wash water
- spin gently
- max. 600© rotations

DRYING

- lying
- absorbent pad
- bring into shape previously
- not in the sun
- not on the heater
- dryer: max. 3 – 5 min. in wool finish program

STEAMING

- ironing not necessary, at most gently from the left and preferably with a fine cotton cloth in between, at max.110°C
- steamer recommended

QUALITY

The origin of the queen of fibers is close to the clouds: At an altitude of up to 4000 meters, cashmere goats live in a climate to which their coat is precisely adapted. In addition to the long outer coat, they have a particularly fine, soft undercoat, which is close to the body, soft and warm.

It is only from these precious hairs of the undercoat that the cashmere wool is carefully combed out, collected and sorted by hand. A cashmere goat yields only 100 to 200 grams of fiber per year.

Cashmere is uniquely fine and light (fiber diameter 15 – 19 microns – 1/6th of a human hair), yet warming, temperature balancing, wrinkle resistant and odor neutralizing. Since the fiber is naturally stain resistant, high temperatures are not necessary when washing.

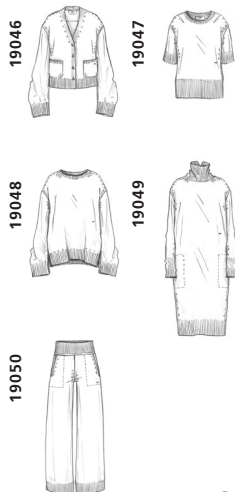
Our cashmere – both solid colors and melange – is exclusively „top dyed“: in this elaborate dyeing technique, the flocks are dyed before they are spun. The yarn is thus more resistant than with strand dyeing, in which the already spun yarn is dyed in the strand.

We use a high-quality classic two-ply yarn, which is therefore form-stable and less prone to pilling. Processed in some styles as a multi-threaded cablé yarn – even more robust and with a clear stitch pattern due to the stronger twisting.

With us, cashmere is always knitted in shape („Fully Fashion“) and never cut. Thus, none of the precious raw material is wasted – sustainably and consistently.

Fully Fashion marks are therefore a factor for high-quality production and not a knitting defect.

The „infinite“ styles: single-thread knitted in a clean smooth knit with fine 1x1 rib details.



© 400

The „pure“ styles: Two-thread smooth knit with 1x1 rib details and horn buttons.



© 400

The „icon“ styles: Multi-thread knitted in half-patent with the typical, elaborately placed Fully Fashion details.



© 800

HANDKNIT The classic cashmere yarn is first processed on the machine as a ribbon yarn and then knitted by hand by our Hamburg knitters with thick needles as 1x1 rib.



© 800

HANDKNIT Air Tape – developed with our yarn supplier: the classic cashmere yarn worked into an airy, round ribbon yarn. Then hand-knitted in a coarse stitch with two strands. Lightness and volume – in Fisherman style: with contrasting stripes in purl structure and plain knit with placed purl stripe in the front center.



© 800

CARE

With proper care, a cashmere sweater will last a lifetime. Caring for cashmere properly is uncomplicated. It only requires a little care.

WASHING

- 30°C
- wool wash
- machine wash
- separately or max. 1 – 2 pieces, which float loosely
- same materials
- similar colors
- close all buttons
- only liquid detergent in low dosage
- special wool detergents prevent felting or roughening of the surface during washing
- recommendation: SMINFINITY Cashmere Care
- no bleaching agents
- no fabric softeners
- no full detergents
- do not leave in the wash water
- spin gently
- max. 800 © rotations

DRYING

- lying
- absorbent pad
- bring into shape previously
- not in the sun
- not on the heater
- dryer: max. 3 – 5 min. in wool finish program

STEAMING

- ironing not necessary
- steamer recommended, especially for coarser knits with structured surface

STORAGE

- natural fragrances (lavender or cedar wood) in the closet
- keep moths away

PILLING

Prevent:

- Minimize risk of friction – e.g., do not wear heavy jackets with a rough inner lining

Remove:

- The gentlest way is to pluck the nodules by hand after washing (before the dryer) when damp.
- Most knots disappear just by washing and during the drying process in the wool-finish program.

QUALITY

A super soft, brushed yarn made from the highest quality cashmere from Inner Mongolia, combined with the finest silk. For the „fluffy“ series, both qualities were twisted and then roughened by brushing. The roughened surface and a particularly airy-loose processing allow the interplay of extraordinary lightness and volume.

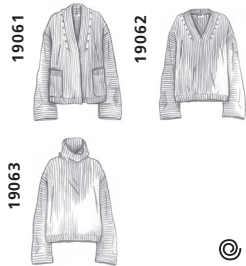
Our cashmere – both solid and melange colors – is exclusively „top dyed“: in this elaborate dyeing technique, the fluffs are dyed before the yarn is spun. This makes the yarn more resistant. The combination with fine silk provides the subtle sheen and a delicate mouliné effect due to the intertwining of the two yarns.

Single thread in a clean and super easy loose knit smooth knit. With 1x1 rib details and rounded hems.



© 400

Multi-threaded knitted in full patent with clean finishes and horizontal ribbing on the sleeve.



© 800

Multi-threaded and smooth knitted triangle scarf with hand-twisted fringes.



© 800

CARE

Loosely knitted parts are particularly soft and somewhat more demanding. Handle gently and avoid strong friction!

WASHING

- 30°C
- wool wash
- machine wash
- separately or max. 1 – 3 pieces, which float loosely
- same materials
- similar colors
- only liquid detergent in low dosage
- recommendation: SMINFINITY Cashmere Care
- no bleaching agents
- no fabric softeners
- no full detergents
- do not leave in the wash water
- spin gently
- max. 400 / 800 © rotations (The spin speed varies depending on the knitted fabric - the coarser or more multi-threaded, the more moisture needs to be spun out after washing to keep the model from losing its shape).

DRYING

- lying
- absorbent pad
- bring into shape previously
- not in the sun
- not on the heater
- dryer: max. 3 – 5 min. in wool finish program

STEAMING

- ironing not necessary
- steamer recommended

STORAGE

- natural fragrances (lavender or cedar wood) in the closet keep moths away

PILLING

With loosely processed yarns with a brushed surface, individual delicate fibers can be loosened more easily and twist into small knots due to friction. But only through a loose processing the fibers unfold and the part becomes so wonderfully soft!

Prevent:

- Minimize risk of friction – e.g., do not wear heavy jackets with a rough inner lining

Remove:

- The gentlest way is to pluck the nodules by hand after washing (before the dryer) when damp.
- Cashmere combs are not recommended; only use them very carefully without too much pressure and lying on a smooth surface in the direction of the stitch. By using the comb, the roughened surface is somewhat refreshed and small knots can be removed.
- electric razor not recommended for brushed yarns

SMINFINITY

QUALITY + CARE

CASHMERE CARE

We recommend our SMINFINITY Cashmere Care, which was specially developed for cashmere and cashmere blends. As it is particularly gentle and gentle, it can also be used well for all other qualities. Gently cares and cleans and prevents felting or roughening of the knitted surface during washing.



CASHMERE CARE	CASHMERE CARE	CASHMERE COMB
6 / 12 / 24 pcs	6 / 12 / 24 pcs	10 pcs
50 ml	240 ml	
Art.Nr. 19301	Art.Nr. 19302	Art.Nr. 19303
UVP: 6,00 EUR / pc	UVP: 14,00 EUR / pc	UVP: 6,00 EUR / pc